

# 2017 IEDRC SOUTH KOREA CONFERENCES ABSTRACT

Jeju Island, South Korea

April 7-9, 2017

Co-Sponsored by



Published By



<http://www.iedrc.org/>

# Table of Contents

Conference Venue	4
Introductions for Publications	5
Instructions for Oral Presentations	6
Time Schedule	7
Introductions for Keynote Speakers	8
Introductions for Plenary Speakers	9
Full Schedule	10
<b>Session 1: CAI and Innovation Pedagogy</b>	
TL0011: Twitter Analytics of the K-12 Education Program of the Philippines using Aylien in Rapidminer	12
<i>Novie Joy C. Pelobello, Raul Vincent W. Lumapas, and Adrian D. Ablazo</i>	
TL0016: Social Media in Higher Education	12
<i>Matthew Montebello, Vanessa Camilleri</i>	
TL0026: Developing a FLIPPED-ACTION Model in a Language-Teaching Internship Program	13
<i>Yee-Chia Hu</i>	
TL0030: Peer Assisted Learning (PAL) in Science and Mathematics: Learning, Leadership, and Student Success Research	13
<i>Jennifer Lundmark, Corey Shanbrom, Lynn Tashiro</i>	
TL0036: Design and Analysis of Bring Your Own Device (BYOD) Pedagogies in Higher Education	14
<i>Gary Cheng</i>	
TL0039: Flipping a US TV Satirical Show to Help Teach Argumentation on an Advanced EAP Course	14
<i>David M. Barnard</i>	
TL0051: Visualizing Student Activity in Blended Learning Classroom by Mining Course Log Data	14
<i>Muammer Ozer</i>	
TL1019: Improving Semantic Association through Brainstorming Activities	15
<i>Elenita P. Galvez</i>	
<b>Session 2: Language Teaching and Education Management</b>	
TL0028: Factors Shaping Higher Education in Botswana: A Recipe for Policy Formulation and Implementation?	15
<i>Mbiganyi Moremi</i>	

TL0038: Discriminant Analysis of the 21st Century Skills on the Graduates' Employment <i>Matthew Montebello, Vanessa Camilleri</i>	16
TL0040: The Development and Validation of the Self-assessment Practice Scale <i>Zi Yan</i>	16
TL0055: Student Participation Characteristics within the Discussion Boards with Post-First Setting: A Case Study in a Graduate Online Course <i>Sunah Cho</i>	17
TL1005: Play-to-Read in 30 Days: Helping Readers At-Risk Within the Response to Intervention (RTI) Framework <i>Lorna B. Yan</i>	17
TL1006: How Creative and Authentic Literacy Based Learning Used for Improving English Competency <i>Ni Nyoman Padmadewi, Ni Putu Ristiati</i>	17
TL1007: Bringing Scientific Procedures into EFL Classes: Material Development and Pedagogical Practice in Junior High School <i>Luh Putu Artini</i>	18
TL1016: Effectiveness of International Graduate Program of Bulacan State University: Basis for Program Enhancement <i>Florentino G. Pineda, Jr.</i>	18
TL1017: Intertextuality and the Hedging System of the Filipino ESP Writers: Practices and Pedagogy <i>Susana Melon-Galvez</i>	19
TL0025: Engaging students in LGBTQ diversity issues in an online setting <i>Trevor Gates</i>	19
<b>Session 3: Economic Behavior and Business Management</b>	
B005-A: Psychological and Socio-Economic Correlates of Student Loan Payment Behavior <i>Soyeon Shim and Joyce Serido</i>	20
B007-A: Herding Behavior and Rational Expectations: Novel Evident from China Market <i>Yi-Chang Chen, Xiao-Ping Lai, Zheng-Man Chen &amp; Shi-Lin Liang</i>	20
B008-A: Information Asymmetry, Earning Management and Dividend Policy: A Panel Study of Zombie Enterprises in China <i>Yi-Chang Chen, Jiedan Huang, Manqi Jiang, Zimian Chen &amp; QiJun Zhong</i>	21
B016-A: Measuring Earnings Quality over Time <i>Yohan An</i>	21
B018-A: The Effects of Separation of Ownership and Control on the Firms' Real Activity Management: The Evidence from China <i>Sang Ho Kim and Yohan An</i>	22

B301-A: A New Index for Identifying Technology Development and a Model for Examination of the Convergence of Actual Amount of Capital to its Optimal Level in OECD Countries	22
<i>Ben David Nissim and Garyn Tal Sharon</i>	
B303: China Business: A Comparative Study	23
<i>Muammer Ozer</i>	
MK0001: Skills and Factors of e-Government: Case study of Sultanate of Oman	23
<i>Muatasim Al Salmi, Shahimi Mohtar and Norlena Hasnan</i>	
MK0002-A: Willingness to Pay Premium: Love or Commitment	23
<i>Sofiani Djohan and Ritzky Karina Brahmana</i>	
MK0004: Model Behavior of Individual Investors Based on DISC-Personality and Demographics In Indonesia Stock Market	23
<i>Elizabeth Lucky Maretha Sitinjak, Kristiana Haryanti, and Wisnu Djati Sasmito</i>	
MK0011: The Research on the Relationship among the Visitors Experience and Satisfaction: Taking 2016 Parent-Child Sports Carnival as an Example	24
<i>Hsiao-Hsuan Chan and Chih-Chiang Chung</i>	
MK0013-A: Engaging Behavioral Economics in Public Administration: Opportunities for Improved Compliance	24
<i>David Kasdan</i>	
MK0018: The Effects of Organizational Influence, Purchase Importance and Supplier Trust on Public Purchase Decision in Dong Nai Province – A Mediation Analysis of Organizational Emotions	25
<i>Ly Tran Thao Vy and Nguyen Thanh Tuan</i>	
Poster Session	26
Listeners' List	26
Call for Papers	27
Note	34

## Conference Venue

### **Hotel Regent Marine the Blue (济州岛海蓝丽景酒店)**

www.hotelrmbblue.com

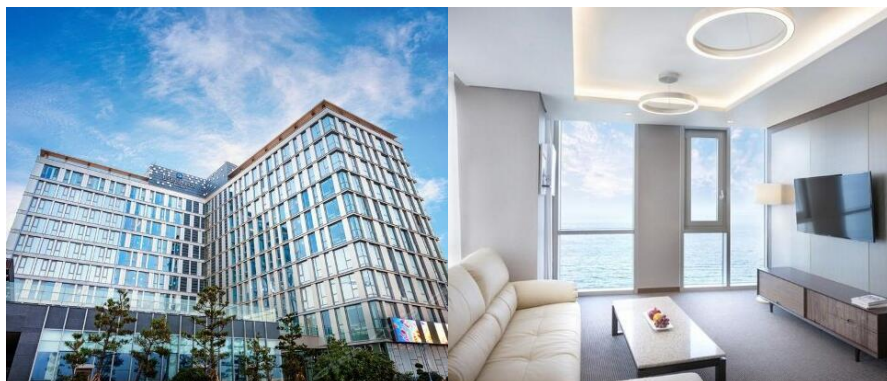
Add: 20, Seobudu 2-gil Jeju-si, Jeju-do, Korea

Tel: 064-717-5000

Contract Person: Steve Kim

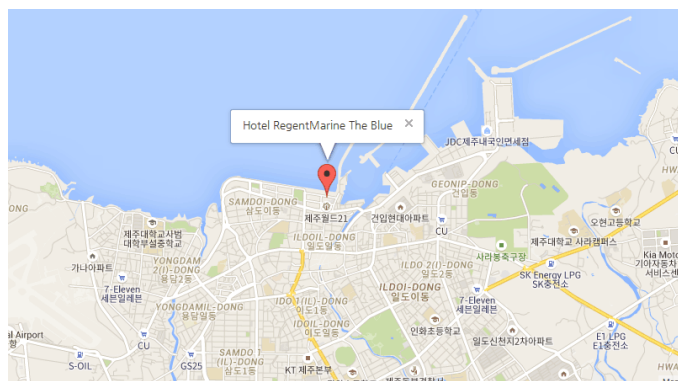
E-mail: skim@hotelrmbblue.com

Escape the daily grind with a trip to the magical coast of Jeju Island, where the sea breeze and waves carry off your worries and replace them with lifelong memories. This is where Hotel Regent Marine the Blue stories begin. Let our outstanding service and cozy ambience illuminate your stay, bringing new and exciting experiences in Jeju. 327 guest rooms offer abundant space and unparalleled comfort, allowing you to immerse yourself in small luxuries like plush bedding, indulgent duvets and crisp linens, all accompanied by stunning views of the Jeju sea from the moment you open your eyes each morning.



#### Location:

In front of Tap-dong Square in Jeju where the beautiful sea and sky spread out, Hotel RegentMarine The Blue welcomes you. Hotel RegentMarine The Blue is located in front of Jeju Tap-dong Square, a major cultural center in Jeju. Go straight via Yongmun-ro from Jeju International Airport intersection Turn right toward Jejumokkwana at Yongmun rotary Pass through Jejumokkwana, turn left toward Tap-dong and go straight 500m (0.3mile) Turn right toward Seobudu and go straight 160m (0.1mile) Arrive at Hotel RegentMarine The Blue (4.7km/2.9mile, 15 minutes).



# Introductions for Publications

All accepted papers for the South Korea conferences will be published in those journals below.

## **2017 3rd International Conference on Learning and Teaching (ICLT 2017)**



International Journal of Learning and Teaching (IJLT)

ISSN: 2377-2891

DOI: 10.18178/ijlt

Abstracting/ Indexing: Google Scholar; Crossref; Engineering & Technology Digital Library; etc.

## **2017 3rd International Conference on Management and Behavioral Sciences (ICMBS 2017)**



International Journal of Innovation, Management and Technology (IJIMT)

ISSN: 2010-0248

Frequency: Biomonthly

DOI: 10.18178/IJIMT

Abstracting/ Indexing: Google Scholar, Ulrich's Periodicals Directory, Engineering & Technology Digital Library, Crossref and ProQuest, Electronic Journals Library.

## **2017 2nd International Conference on Business and Economics (ICOBE 2017)**



Journal of Economics, Business and Management (JOEBM)

ISSN: 2301-3567

Frequency: Monthly (Since 2015)

DOI: 10.18178/JOEBM

Abstracting/ Indexing: Engineering & Technology Library, Electronic Journals Library, Ulrich's Periodicals Directory, MESLibrary, Google Scholar, Crossref, and ProQuest.

## **Instructions for Oral Presentations**

### **Devices Provided by the Conference Organizer:**

Laptops (with MS-Office & Adobe Reader)

Projectors & Screens

Laser Sticks

### **Materials Provided by the Presenters:**

Power Point or PDF Files (Files should be copied to the conference laptop at the beginning of each session)

### **Duration of each Presentation (Tentatively):**

Regular Oral Presentation: about 15 Minutes of Presentation and Q&A

Keynote Speech: 30 Minutes of Presentation, 5 Minutes of Q&A

Plenary Speech: 25 Minutes of Presentation, 5 Minutes of Q&A

## **Instructions for Poster Presentation**

### **Materials Provided by the Conference Organizer:**

The place to put poster

### **Materials Provided by the Presenters:**

Home-made Posters

Maximum poster size is A1

Load Capacity: Holds up to 0.5 kg

## **Best Presentation Award**

One Best Oral Presentation will be selected from each presentation session, and the Certificate for Best Oral Presentation will be awarded at the end of each session on April 8, 2017.

## **Dress Code**

Please wear formal clothes or national representative clothing.

# Time Schedule

Day 1:

Lobby	April 7, 2017 10:00-17:00	Registration & Conference Materials Collection
-------	------------------------------	---

Day 2:

Regent Room	April 8, 2017 8:25-12:30	8:25-8:30	Opening Remarks Prof. Cheol Park School of Business Administration Korea University, South Korea
		8:30-9:05	Keynote Speech 1 Prof. Hong-Ghi Min Korea Advanced Institute of Science and Technology (KAIST), South Korea Title: US Financial Crisis and Information Asymmetry in the Korean Stock Market
		9:05-9:40	Keynote Speech 2 Prof. Cheol Park School of Business Administration Korea University, South Korea Title: Competency of Mobile Information and Quality of Life in Korea, China, and US
		9:40-10:00	Coffee Break & Group Photo Venue:
		10:00-10:30	Plenary Speech Assoc. Prof. Eric C.K. Cheng The Education University of Hong Kong, Hong Kong Title: A Normative Knowledge Management Model for School Development
		10:30-12:30	Session 1 (8 papers) Theme: CAI and Innovation Pedagogy
	12:30-13:30		Lunch Venue:
Regent Room	April 8, 2017 13:30-19:15	13:30-16:00	Session 2 (10 papers) Theme: Language Teaching and Education Management
		16:00-16:15	Coffee Break
		16:00-19:15	Session 3 (13 papers) Theme: Economic Behavior and Business Management
	April 8, 2017 19:30-21:00		Dinner Banquet Venue:



## Introductions for Keynote Speakers



Prof. Cheol Park

School of Business Administration Korea University, South Korea

Cheol Park (Ph.D. in Business Administration) is a Professor at Korea University, South Korea. He received his B.A. in Economics, M.B.A. and Ph.D. from Seoul National University. He worked for Samsung as assistant manager of global marketing before joining academic area. He has been a visiting scholar at Vanderbilt University, University of Hawaii, and Mongolia International University. His research interests include marketing in digital environment and sustainable management with creating social value. He has published papers in influential journals such as International Marketing Review, Journal of Business Research, Industrial Marketing Management, and Journal of Interactive Marketing.



Prof. Hong-Ghi Min

Korea Advanced Institute of Science and Technology (KAIST), South Korea

Dr. Hong-Ghi Min, (Ph.D. in Economics), now is a Professor of Economics at the Management Science Department in KAIST (Korea Advanced Institute of Science and Technology), Expert of KECG (Korea Experts Consulting Group), Board of Directors of Korea International Economic Association, Member of Editorial Board for Journal of Financial Risk Management. He got his BSc in Economics at Seoul National University and Economics Doctoral degree at Binghamton University (SUNY). He was an Economist and a Consultant of Policy Research Department (Finance) at The World Bank (Washington D.C.) from 1997 to 1999, Research Director at Global Project Investment from 1999 to 2001 and a Consultant in Policy Research Department (Poverty) at The World Bank (Washington D.C.) during 2001~2002. Currently, Dr Min's research focuses on international financial markets and emerging Asian economies.

## Introductions for Plenary Speakers



Assoc. Prof. Eric C.K. Cheng  
The Education University of Hong Kong, Hong Kong

Dr. Eric Cheng is a specialist in knowledge management, educational management and Lesson Study. He is currently associate professor of the Department of Curriculum and Instruction of the Education University of Hong Kong. Eric earned his Doctor of Education in education management from the University of Leicester. He has been publishing locally and internationally, with over 50 articles in various media covering the areas of knowledge management, school management and Lesson Study. He is the author of an academic book entitled Knowledge Management for School Education published in 2015 by Springer. Eric has been successful in launching more than 10 research and development projects with external and competitive funds in the capacity of Principal Investigator (PI). He received the Knowledge Transfer Project Award from EDUHK in 2014-15, Scholarship of Teaching Award in 2013-14 and Knowledge Transfer publication Awards in 2012-13 from Faculty of Human Development of EDUHK.

## Full Schedule

### Day 1: Registration: April 7, 2017 (Friday)



10:00 – 17:00	Arrival and Registration (Venue: Lobby)
---------------	--

- (1) Please print your registration form before you come to the conference.
- (2) You can also register at any time during the conference.
- (3) Certificate of Participation can be collected at the registration counter.
- (4) Your paper ID will be required for the registration.
- (5) The organizer won't provide accommodation, and we suggest you make an early reservation.
- (6) One best oral presentation will be selected from each oral session. The Certificate for the best one will be awarded at the end of each session on April 8, 2017.

### Day 2: Conference: April 8, 2017 (Saturday)

Venue: Regent Room

8:25-8:30	<p>Opening Remarks</p>  <p>Prof. Cheol Park School of Business Administration Korea University, South Korea</p>
8:30-9:05	<p>Keynote Speaker 1</p>  <p>Prof. Hong-Ghi Min Korea Advanced Institute of Science and Technology (KAIST), South Korea</p> <p><b>Title:</b> US Financial Crisis and Information Asymmetry in the Korean Stock Market  <b>Abstract:</b> This study examines information asymmetry in Korean stock market by comparing the information quality of domestic institutes, individual investors, and foreign investors using the daily and monthly data from 2006 to 2013. We propose the agreement ratios (AGR) as measures of information in stock market. First, we find that the estimated AGRs of foreign investors are greatest among three investor groups while that of individual investors are smallest. Second, we test the information quality of different investors and we find that information quality of domestic institute investors and foreign investors are good, i.e., their</p>

	<p>information deliver significant positive profits while that of domestic individual investors deliver losses. We also demonstrate that the information quality of foreign investors has improved since the US financial crisis and this is more prominent when we denominate the profit in US dollars. In conclusion, the information quality of domestic individual investors is worse than that of other investors, and this indicates the existence of information asymmetry in Korean stock market and this low information quality of individual investors could result from the heterogeneity in individual investors. At the same time, we believe the improvement of information quality for foreign investors after the US financial crisis comes from their easy access to global information.</p>
9:05-9:40	<p style="text-align: center;"><b>Keynote Speaker 2</b></p>  <p style="text-align: center;">Prof. Cheol Park School of Business Administration Korea University, South Korea</p> <p><b>Title:</b> Competency of Mobile Information and Quality of Life in Korea, China, and US  <b>Abstract:</b> Due to the spread of smart phones, mankind has been able to access and use a variety of mobile information anywhere, anytime. Mobile competency, the capability of accessing and using mobile information is affect the quality of the individual's life. In this study, 1,290 South Korean, Chinese, and American responded on mobile competency and quality of life. As a result, Korean had highest score in mobile information accessibility, but American in mobile information utilization. Korea showed lowest rating in improvement of quality of life due to mobile competency. The result shows that Korean do not properly utilized mobile information for higher quality of life although they use longest time of mobile internet. Also, consumer innovativeness had the greatest influence on the utilization of mobile information among individual variables.</p>
9:40-10:00	<p style="text-align: center;">Coffee Break &amp; Group Photo Venue:</p>
10:00-10:30	<p style="text-align: center;"><b>Plenary Speaker</b></p>  <p style="text-align: center;">Assoc. Prof. Eric C.K. Cheng The Education University of Kong Kong, Hong Kong</p>

	<p><b>Title:</b> A Normative Knowledge Management Model for School Development</p> <p><b>Abstract:</b> This paper discusses the application of Knowledge Management (KM) strategies in a school context with a view to bridging the knowledge gaps that exist between the strategic plan for school development and its implementation. Cheng's (2015) normative model for implementation was adopted as the theoretical framework for the study. A case study was developed using data collected from the school by means of group interviews and documentary reviews. The results show that the role of the school leadership in formulating people-based and information-based knowledge strategies and a supportive working culture are critical for the effective implementation of Knowledge Management.</p>
--	--

### Session 1

10:30-12:30, April 8, 2017

Venue: Regent Room

Theme: CAI and Innovation Pedagogy

Session Chair:

\*The time slots assigned here are only tentative. Presenters are recommended to stay for the whole session in case of any absence.

\*\*After the session, there will be a group photo for all presenters in this session.

ID	Title+ Author's Name
TL0011 10:30-10:45	<p>Twitter Analytics of the K-12 Education Program of the Philippines using Aylien in Rapidminer</p> <p><b>Novie Joy C. Pelobello</b>, Raul Vincent W. Lumapas, and Adrian D. Ablazo Ateneo de Davao University, Philippines</p> <p><b>Abstract:</b> This research performed twitter mining to obtain information about the opinion of the people towards the new K-12 education program of the Philippines through opinion poll from Twitter microblogs to obtain the general sentiment of the K-12 education system. Specifically, it generates a three-way sentiment polarity in terms of positive, negative and neutral sentiments.</p> <p>It also explores the use of RapidMiner as a platform to perform analytics on Twitter data. Researchers used various RapidMiner operators to process the Twitter microblogs and generate sentiment analysis. Specifically, it utilized AYLIEN as an extension module of RapidMiner for text analysis and extract insights from these tweets.</p> <p>This paper shows that most of the sentiments about the K-12 education system on Twitter are neutral sentiments. Most of the tweets simply convey information about the K-12 program and do not show a positive or negative opinion. The study also revealed a very high positive correlation between the tweet message and the permalink for the K-12 sentiments.</p>
TL0016 10:45-11:00	<p>Social Media in Higher Education</p> <p><b>Matthew Montebello</b>, Vanessa Camilleri University of Malta, Malta</p> <p><b>Abstract:</b> The use of social media technologies in higher education have played an important role especially in both the formal and informal aspect. In this paper we delve deeper into the pedagogical connotations of this phenomenon as we identify three social media characteristics and trace them back to established learning theories as we document evidence of their</p>

	<p>manifestation in real academic scenarios. We conclude that social media technologies are no random manifestation of pedagogical solicitation, but a natural and inevitable occurrence that fulfilled and satisfied a societal and human need and that was only possible through advances in information and communications technology.</p>
<p>TL0026 11:00-11:15</p>	<p>Developing a FLIPPED-ACTION Model in a Language-Teaching Internship Program <b>Yee-Chia Hu</b> Ming Chuan University, Taoyuan, Taiwan</p> <p><b>Abstract:</b> With 69 participants taking a course titled Bilingual Education and Teaching in the Department of Teaching Chinese as a Second Language, this project introduces an empirical study which covers two 20-week class experiments under the monitoring of action research in 2015 and 2016. Surveys are administered to elicit the information about the relationships between the FLIPPED-ACTION implementation and the students' reaction. Cross-analyzing the quantitative data serve as a reference for verifying the degree of effectiveness of course design and an indicator of learning outcome. The result shows that all the paths calculated by the statistic tool are significant (***) 0.001). The model supports all hypotheses. All features in the model positively affect each other, suggesting that each of the features plays an essential role in building the FLIPPED-ACTION course model which promotes the students' skills employed in the internship.</p>
<p>TL0030 11:15-11:30</p>	<p>Peer Assisted Learning (PAL) in Science and Mathematics: Learning, Leadership, and Student Success Research Jennifer Lundmark, Corey Shanbrom, <b>Lynn Tashiro</b> California State University Sacramento, USA</p> <p><b>Abstract:</b> The percentage of students who fail university introductory math and science courses is a significant barrier to preparing students for careers in Science, Technology, Engineering, and Mathematics (STEM). To improve learning and pass rates in these gateway courses, which were as low as 50%, the faculty at California State University Sacramento implemented a Peer Assisted Learning (PAL) program. Using research and evidence based models such as Peer Led Team Learning and Culturally Responsive Instruction, a collaborative team of faculty and students created a transformative STEM student success program.</p> <p>Over the past five years, more than 3,000 students have participated in the PAL program. PAL students average a 10% higher pass rate compared to non-PAL students in nine gateway courses across chemistry, math, and biology. Regression analyses and propensity score matching studies confirm that this improvement is not due to selection bias related to academic preparation. A nine year study of over 32,000 students provides evidence of an overall increase in the average course GPA in these critical gateway courses.</p> <p>The PAL program has empowered students to be successful who are traditionally underrepresented in STEM such as women and ethnic minorities. Specifically, data for the calculus series shows Hispanic students in PAL earn grades comparable or higher than the average despite lower math SAT and college readiness scores. The PAL program and presented studies are part of a five year United States National Science Foundation Science Talent Expansion Program that seeks to improve the learning and preparation of STEM professionals.</p>

<p>TL0036 11:30-11:45</p>	<p>Design and Analysis of Bring Your Own Device (BYOD) Pedagogies in Higher Education <b>Gary Cheng</b> The Education University of Hong Kong, Hong Kong <b>Abstract:</b> This paper reports and discusses the findings from a study exploring the use of Bring Your Own Device (BYOD) for teaching and learning at a university in Hong Kong. Seventy-one undergraduate students enrolled on an English course participated in the study. A pedagogical framework is proposed to guide the design of BYOD-mediated lessons, and the potential of BYOD pedagogies to support teaching and learning is examined. Learning gains from BYOD-mediated lessons are reflected in students' assessment results. Some merits and challenges associated with BYOD-mediated learning are emerged from students' focus group responses. The findings contribute to an expanded understanding of the BYOD experience across educational settings.</p>
<p>TL0039 11:45-12:00</p>	<p>Flipping a US TV Satirical Show to Help Teach Argumentation on an Advanced EAP Course <b>David M. Barnard</b> The Hong Kong Polytechnic University, Hong Kong <b>Abstract:</b> Many students have difficulty with understanding how to use evidence in argument building for effective persuasive essay writing. They have questions relating to what kind of research is reliable and how they can effectively use the information they find. Considering these difficulties John Oliver's HBO programme 'Last week tonight' offers a good opportunity to practice these skills in an authentic way. This presentation focuses on a flipped classroom technique using Oliver's program to promote critical thinking regarding the use of evidence in persuasive argumentation. This activity has been used successfully on an advanced EAP course at a tertiary institution in Hong Kong over the past two years and is the product of a desire to use more authentic materials with the students. Due to the more adult nature of the language used by Oliver this technique might not be acceptable for all age levels but is motivational for students as it helps identify the difference between high school and university, as well as introduces them to a world of entertainment and thought they may not otherwise be exposed to. At a time in the world when rational debate is sorely needed it is important that EAP teachers can help their students clearly understand and critique arguments in both the media and their research. The presentation will include insights from classroom research into the use of authentic video in the classroom and student perceptions of the use of evidence in their writing, as well as offering an interesting activity.</p>
<p>TL0051 12:00-12:15</p>	<p>Visualizing Student Activity in Blended Learning Classroom by Mining Course Log Data <b>Rodolfo C. Raga Jr., Jennifer D. Raga, and Israel V. Cariño</b> Jose Rizal University, Philippines <b>Abstract:</b> Many higher educational institutions (HEIs) in the Philippines have started to implement web-based learning environments capable of delivering online education in an academic setting. These environments are often based on the functions and features of Learning Management Systems (LMS) such as Moodle. Due to the nature of the design of these environments which focuses on allowing students access to educational resources at their own discretion, HEIs are now also capable of routinely collecting vast quantities of data on student's online activity. Taking advantage of this data, however, is neither simple nor</p>

	straightforward due to its massive volume and high rate of velocity. Based on experience, this keeps instructors from making meaningful sense and use of this data. This paper describes a proposal for a novel data driven approach in analyzing student action logs recorded by Moodle in order to generate graphical representations that can be used by instructors to monitor students' activities at any stage of course progression. The analysis was carried out using log data obtained from several blended courses dispensed in one University using a Moodle platform. The initial findings indicate a strong indication that the approach can be used to reveal variations in behavioral aspects of students in terms of patterns in resource access, assessment tasks, and degree of engagement. The concluding section of this paper presents some implications for further improvements and for future research plans.
TL1019 12:15-12:30	<p>Improving Semantic Association through Brainstorming Activities</p> <p><b>Elenita P. Galvez</b> Bulacan State University, Philippines</p> <p><b>Abstract:</b> Children with semantic difficulty have a very hard time in understanding logical ideas relating to meaning. Enriching vocabularies to gain better chance of expressing oneself meaningfully in oral and in written forms could be done with brainstorming activities. To understand better, there is a need to improve skills on semantics; the interpretation and meaning of words put together, sentence structures and symbols.</p> <p>The researcher found the use of brainstorming activities a means to improve students' semantic association. Such activities give each group participant to bring out ideas openly with no hesitation to criticisms. These exercises serve as a tool in making students speak before a group to allow wilder ideas be brought into open which unconsciously improve semantic association. The researcher opts for a descriptive method through observation of the brainstorming activities, how students relate to the issues and how they will stand for their individual thoughts depending on their beliefs, educational background, cultural orientation, and social status.</p>

12:30-13:30, April 8, 2017	Lunch Venue:
----------------------------	-----------------

**Session 2**

13:30-16:00, April 8, 2017

Venue: Regent Room

Theme: Language Teaching and Education Management

Session Chair:

\*The time slots assigned here are only tentative. Presenters are recommended to stay for the whole session in case of any absence.

\*\*After the session, there will be a group photo for all presenters in this session.

ID	Title+ Author's Name
TL0028 13:30-13:45	<p>Factors Shaping Higher Education in Botswana: A Recipe for Policy Formulation and Implementation?</p> <p><b>Mbiganyi Moremi</b> Botswana International University of Science and Technology (BIUST), Botswana</p>



	<p><b>Abstract:</b> The paper explores factors shaping higher education in Botswana and whether these factors are a testing ground for policy formulation and implementation. The research was guided by key objectives that focused on some factors that shape higher education in Africa and Botswana. These objectives culminated in the researcher using two futures thinking methodologies. That is, the Delphi Real-Time Questionnaire (DRTQ) and the Futures Wheel (FW). In the DRTQ experts on higher education in Botswana gave their expert opinions on factors shaping higher education in the country. They were drawn from various tertiary institutions in the country like Universities, College of Education and Technical Colleges. These experts also completed the FW where they brainstormed on the primary and secondary impact of trends in higher education in Botswana. The experts believe the government of Botswana prioritises higher education as reflected by a huge budget allocation to the sector and the development of the Education and Training Sector Strategic Plan (ETSSP) to focus on issues affecting higher education among others. Feedback from the Futures Wheel identified 6 trends that have primary impact on higher education in Botswana. The secondary impacts, which were drawn from the primary impacts, captured the following according to the experts; maintenance of higher education standards, relevant targeted education, improved service delivery, higher world rankings, knowledge society creation, increased global participation and globally competitive graduates.</p>
<p>TL0038 13:45-14:00</p>	<p>Discriminant Analysis of the 21st Century Skills on the Graduates' Employment  <b>Afifi Lateh</b>, Supansa Suvanchatree, Supakan Buathip, and Noorasikin Yeesaman  Faculty of Education, Prince of Songkla University Pattani Campus, Thailand</p> <p><b>Abstract:</b> The study aimed to discriminate the 21st century skills that influenced the employment of the graduates from the Faculty of Education, Prince of Songkla University, Pattani Campus. The sample size of 138 was set by simple random sampling technique via G*Power Program. The research instrument was the 21st century skills assessment form. It was found that the 21st century skills operational levels of the employed graduates and the unemployed graduates were "often" in every skill. For the group of the employed, the compassion had the highest mean followed by the communications, information, and media literacy skill. In the same way, the highest mean of the group of the unemployed was the compassion followed by the career and learning skill. On the contrary, the cross-cultural understanding skill had the lowest mean in both groups. The logistic discriminant analysis shows that the creativity and innovation skills and the career and learning skills had a statistically significantly positive effect whereas the critical thinking and problem solving skills, the communication, information and media literacy skills, and the computing and ICT literacy skills had a statistically significantly negative effect. The correctness score of the classification based on discrimination function was 71.7 %.</p>
<p>TL0040 14:00-14:15</p>	<p>The Development and Validation of the Self-assessment Practice Scale  <b>Zi Yan</b>  The Education University of Hong Kong, Hong Kong</p> <p><b>Abstract:</b> Self-assessment is a core skill for self-regulated learning and life-long learning. This study aims to develop a new instrument entitled Self-assessment Practice Scale and to examine the psychometric properties of the scale using a sample of Hong Kong primary and secondary</p>

	<p>students. A total of 2,906 Hong Kong students ranged from primary 4 to secondary 3 completed the scale. Findings from Rasch and factor analyses suggested the use of a three-dimension structure (i.e., Seeking External Feedback, Seeking Internal Feedback and Self-reflection) to assess students' self-assessment practice. The three subscales demonstrated acceptable psychometric properties. Limitations and suggestions for further improvement were proposed.</p>
<p>TL0055 14:15-14:30</p>	<p>Student Participation Characteristics within the Discussion Boards with Post-First Setting: A Case Study in a Graduate Online Course</p> <p><b>Sunah Cho</b> The University of British Columbia, Vancouver, Canada</p> <p><b>Abstract:</b> The purpose of this study is to identify student participation characteristics within the discussion boards using a recent Blackboard Post-First setting in a graduate online course. Unlike the standard discussion forum setting, where students can typically see their peers' posts anytime, the Post-First setting requires students to post their own original response first. The new setting allows for topic focus and original responses but it discourages interactive discussions. Due to its forced and limited setting, some students expressed resistance against the Post-First condition. However, the new setting allows for even and sustained student participation throughout the course. Early posts receive more feedback from peers than do posts done at a later time.</p>
<p>TL1005 14:30-14:45</p>	<p>Play-to-Read in 30 Days: Helping Readers At-Risk Within the Response to Intervention (RTI) Framework</p> <p><b>Lorna B. Yan</b> Department of Education, Ateneo De Manila University, Quezon City, Philippines</p> <p><b>Abstract:</b> The study investigated the experiences, responses, and reading achievements of at-risk kindergarten readers of Jubilee Christian Academy in Quezon City, Philippines to a reading intervention program delivered within the Tier 2 of the Response to Intervention (RTI) model. The key elements of an effective reading instruction as determined by the National Reading Panel were used as the core components of the play-based reading intervention program: phonemic awareness, listening comprehension, vocabulary, phonics, and fluency. To implement properly the complexities of the RTI approach, the RTI Guiding Principles for Education in the implementation of the intervention program under the Tier 2 framework was utilized. The intervention conducted on the participants of the program appeared to have worked. They responded adequately to the 30-day Tier 2 instruction as shown in their reading behavior and gain scores in phonemic awareness, phonics, and fluency.</p>
<p>TL1006 14:45-15:00</p>	<p>How Creative and Authentic Literacy Based Learning Used for Improving English Competency</p> <p><b>Ni Nyoman Padmadewi, Ni Putu Ristiati</b> Ganesha University of Education, Bali, Indonesia</p> <p><b>Abstract:</b> It has been evident that the Indonesian students' English literacy has not been satisfying compared to the literacy of students from other countries. Therefore, this research aimed at bringing real-word, creative and authentic literacy to the classroom to improve students' literacy. The research was a type of classroom research conducted at a bilingual</p>

	<p>school in North Bali for several years since 2014. The data were collected using observation and deep interview, and analyzed qualitatively. The results of the research show that literacy based learning which emphasizes on the authentic literacy uses instead of school-only literacy usage satisfactorily show consistently clear and confident findings of English competency improvement. The uses of creative and authentic literacy projects like literacy scavenger hunt, exhibition-literacy based task, cooperative reading stories, literacy jigsaw task, novel study, reading response journal, and door decorating contest for literacy have been able not only to improve the students' English literacy in reading and writing, but also proven effective to build students' character of being confident, critical thinking, cooperative, taking initiatives, and also can lead them to be autonomous learners and love reading. This research hopefully can inspire other researchers as well as other teachers not only in Bali Indonesia but also in other countries where literacy based learning need to be improved.</p>
<p>TL1007 15:00-15:15</p>	<p>Bringing Scientific Procedures into EFL Classes: Material Development and Pedagogical Practice in Junior High School  <b>Luh Putu Artini</b>  Ganesha University of Education, Indonesia  <b>Abstract:</b> Teaching and learning activities in EFL classes should provide opportunities for the students to develop their curiosity and motivation by working on challenging tasks that require them to search, decide, analyze, conclude and report. All the process requires students to work cooperatively in a group and develop their communication skills along the process. At the end of the process, the groups will be requested to present their work in the form of oral presentation or class publication. This process is segmented into 5 procedures of scientific approach: observing, questioning, collecting data (information), associating and communicating. This paper presents the results of a research and development project that results in instructional materials and pedagogical practices for Grade 7 students who learn English as a foreign language in Bali, Indonesia. The impact of the practice on students' language learning skills is also discussed.</p>
<p>TL1016 15:15-15:30</p>	<p>Effectiveness of International Graduate Program of Bulacan State University: Basis for Program Enhancement  <b>Florentino G. Pineda, Jr.</b>  Bulacan State University, Philippines  <b>Abstract:</b> The study dealt on the Effectiveness of International Graduate Programs of BSU as Basis for Program Enhancement. The research aims to evaluate its purpose, its standard as indicated by academic standards, such as: standards of competence, service standards and organizational standards. One of the primordial considerations of the Graduate School is its goal to produce balanced, competent, research oriented and globally competitive graduates. Thus, the researcher conceptualized the study; to accomplish the needed interactions with the officials and students of BSU – Hong Kong Lifelong Education Organization Limited; to unearth issues and modern trends, policies and programs for BSU adoption to benefit the local students and; to initiate or trail- blazed foreign researches for the upliftment the Research and Extension Services of Department, where B.S.U. had fell short during previous evaluation. The study used the descriptive, qualitative design using survey-questionnaire and interview as</p>

	<p>the primary data gathering instruments. Documented data on demographic profile of students, number of graduates, and ranking of BSU Hong Kong also utilized.</p> <p>The enrolled graduate students of BSU Hong Kong, faculty and administrators of BSU Hong Kong were the respondents of the study.</p>
<p>TL1017 15:30-15:45</p>	<p>Intertextuality and the Hedging System of the Filipino ESP Writers: Practices and Pedagogy <b>Susana Melon-Galvez</b> Bulacan State University, Philippines</p> <p><b>Abstract:</b> Communicators must have a ‘pact’; right idea, equals the ‘right words’. Although text is taken wholly to get to the meaning, every word contributes to the message sent for a powerful effect to the receiver. For language to work, participants must therefore be in full control of the words to be used. How these words are framed or intertextualized bring the hedging system of the ESP students. To achieve precision in ESP writing is not simply stringing words. To effectively communicate, there are underlying principles to apply to improve constant human interaction. In order to maintain such relationship in the technical world, each participant must not totally eradicate the ‘feeling’ to get across to the meaning. The study aimed at finding out the use of hedges and the effects of task types caused by framing of ideas and whether these hedges were significant to Filipino ESP writers. Common practices were identified as well as some pedagogical implications in the writing of technical discourses. Using introspection and contextual analysis, the researcher was able to analyze hedges varying from words, phrases to clauses. The researcher found nonsensicality in intertextualizing ESP texts and had no bearing on the hedging system of the ESP writers.</p>
<p>TL0025 15:45-16:00</p>	<p>Engaging students in LGBTQ diversity issues in an online setting <b>Trevor Gates</b> Buffalo State College, State University of New York, USA</p> <p><b>Abstract:</b> Beliefs about lesbian, gay, bisexual, transgender, and queer (LGBTQ) issues and rights have been a concern of human service organizations for the past several decades. Position statements from professional human service organizations, including National Association of Social Workers' acknowledge the importance of competent and affirmative practice with the LGBTQ communities. Recent Educational Policy and Accreditation Standards note that diversities shape the human experience, and multiple intersecting identities, including race and ethnicity, class, gender, sexual orientation, and other identities inform how human service workers interact in the world. While these position statements represent positive, affirmative commitments to appreciating sexual orientation and gender identity/expression diversity, whether these position statements actually lead to reduced stereotypes about LGBTQ communities is unclear. In this presentation, I will discuss my own experiences teaching about LGBTQ diversity in an online classroom. Challenges and opportunities for talking about sensitive issues such as LGBTQ issues will be explored. Additionally, I will explore lessons learned and make recommendations for future teaching on LGBTQ content.</p>

16:00-16:15, April 8, 2017

Coffee Break  
Venue:

**Session 3**

16:00-19:15, April 8, 2017

Venue: Regent Room

Theme: Economic Behavior and Business Management

Session Chair: Prof. Hong-Ghi Min

\*The time slots assigned here are only tentative. Presenters are recommended to stay for the whole session in case of any absence.

\*\*After the session, there will be a group photo for all presenters in this session.

ID	Title+ Author's Name
B005-A 16:00-16:15	<p>Psychological and Socio-Economic Correlates of Student Loan Payment Behavior  <b>Soyeon Shim</b> and Joyce Serido  School of Human Ecology, University of Wisconsin-Madison, USA</p> <p><b>Abstract:</b> Our study focuses on developing and testing a model of a process by which young adults develop problem-solving skills and apply them to their financial problems, which amounts to paying off their student loans. Using data (N=371) collected by means of a four-wave longitudinal survey of young adults attending college in US, we sought to determine if those students' loan payment status (i.e., paid off, on time, or behind, excluding default) differed in psychological, socio-economic, or financial knowledge and behaviors. ANOVA analyses revealed that those who were behind in their payments exhibited both more negative and less positive problem-solving orientations and a greater tendency to use avoidance style. They perceived themselves as having lower financial self-efficacy and greater obstacles with the repayment system. The W4 data showed them to be suffering higher levels of emotional stress, more symptoms of depression, and lower life satisfaction. Chi-square analyses showed that those who were from lower SES families, among the first generation college graduates, or unemployed tended to be behind in their payment; no differences were found in gender and ethnicity. Across all four waves, no differences in <i>objective</i> financial knowledge or healthy financial behaviors were found. We concluded that student-loan repayment behaviors have more to do with certain psychological and socio-economic factors that come into play during the loan payment period, and less to do with objective financial knowledge or behaviors displayed over time. Our findings should help young adults develop effective problem-solving skills and financial self-efficacies and also increasing earning capabilities.</p>
B007-A 16:15-16:30	<p>Herding Behavior and Rational Expectations: Novel Evident from China Market  Yi-Chang Chen, Xiao-Ping Lai, Zheng-Man Chen &amp; <b>Shi-Lin Liang</b>  Academy of Politics &amp; Business Studies, Nanfang College of Sun Yat-sen University, China</p> <p><b>Abstract:</b> It is well known that most of investors in China market are less informed than institutional investors or informed traders, and the existence of rational expectations for the policy restrictions during high volatile periods. Thus it might lead to investors to imitate the action of other investors. Through survey, previous studies have made contributions to detecting herding behavior among mutual fund (Lakonishok et al., 1992; Grinblatt et al., 1995; Wylie, 2005; Andreu et al., 2009; Huang et al., 2010), banking sector (Cakan and Balagyozyan, 2014) and real estate markets (Babalos et al., 2015). There are several concepts of herding behavior in the majority of the earlier studies, such as the contagion effect (Boyer et al., 2006; Chiang and Zheng 2010; Galariotis et al., 2015), and the relationship between volatility</p>

	<p>problem and herding (Blasco et al., 2012). This paper aims to examine whether the changes under the rational expectation of tendency to herd among investors for different market conditions in China market. We constructed the Rational Level (RL) based on fundamentals and non-fundamentals that have been proposed by Bikhchandani and Sharma (2000) and Galariotis et al. (2015). To compute RL, the mean difference between fundamentals and non-fundamentals are used as the benchmark. Galariotis et al. (2015) suggest that the herding due to fundamental information and use them to proxy spurious herding; and that driven by other reasons and use them to proxy intentional herding. The daily data range is from 2 January 2008 to 27 November 2015 for China markets in Shanghai, Shenzhen and composite market. We use the quantile regression (Koenker and Bassett 1978) to test the existence of herding, under the rational expectation, and comparing the different changes with high quantiles distribution and the low ones. We expected that the herding is less found to be present in periods of market tumult. As such, it provides a view of how the belief of expectation leads to the decision of herd over different quantiles. The analysis results contribute to the financial theory by providing insights into behavioral finance.</p>
<p>B008-A 16:30-16:45</p>	<p>Information Asymmetry, Earning Management and Dividend Policy: A Panel Study of Zombie Enterprises in China Yi-Chang Chen, Jiedan Huang, Manqi Jiang, <b>Zimian Chen</b> &amp; QiJun Zhong Accounting School, Nanfang College of Sun Yat-sen University, China <b>Abstract:</b> A puzzle for the listed company in China's stock market is why the zombie enterprises are stay alive? There were common characters, such as the low profitability (García-Herrero, 2009), a high debt ratio (Yu, 2016) and perhaps a misguided government policies (Jaskowski, 2015), which are not suitable for the evaluation proposed by Easton (2004). This paper aims to examine the effect of asymmetric information based on earning management and dividend policy. We selected the sample from 2004 to end of 2015 in two steps. First, we divided the companies make up of zombies and non-zombies through re-estimated the implied cost of equity (including P/E ratio, PEG ratio and modified PEG ratio). Then we selected the levels of size and industry, such as policy company and fully state-owned within the models as the control variables. Through survey, we test the hypotheses using Panel Generalized Least Squares (GLS). We expected that the positive impact on earning management and existence of asymmetric effects on dividend policy among zombies. The analysis results contribute to the financial theory by providing insights into banking, corporate government and behavioral finance.</p>
<p>B016-A 16:45-17:00</p>	<p>Measuring Earnings Quality over Time <b>Yohan An</b> Tongmyong University, Korea <b>Abstract: Objectives:</b> The purpose of this paper is to analyze earnings quality over the twelve years. We measure earnings quality as two types of dimensions: 1) decision usefulness and 2) stewardship (or accountability) based on the conceptual framework of the International Financial Reporting Standards (IFRS). <b>Methods/Analysis:</b> We investigate earnings quality of listed firms on the Korean Stock Exchange (KSE) using a sample of 9,584 firm-year observations over the period 1995 to 2006. Earnings quality as decision usefulness is measured</p>

	<p>as persistence and value-relevance, while earnings quality as stewardship (or accountability is measured as conservatism and accruals quality. <b>Findings:</b> This study finds earnings quality of Korean firms is relatively lower than that of developed countries across three earnings quality dimensions except for conservatism. Thus, it is likely that Korean firms engage in earnings management in the presence of economic incentives, thereby reducing earnings quality.</p>
<p>B018-A 17:00-17:15</p>	<p>The Effects of Separation of Ownership and Control on the Firms' Real Activity Management: The Evidence from China  <b>Sang Ho Kim</b> and Yohan An  Xi'an Jiaotong-Liverpool University, China  <b>Abstract:</b> Using panel data set of Chinese listed firms over thirteen-year periods (2003-2015), this paper investigates the impact of separation of ownership control on firm's real activity management.  Results from analysis indicate that earnings management through discretionary accruals responds to only higher ownership. However, disproportional ownership is significantly negatively related with real activity earnings management.  This result implies that Chinese capital market, agency problem between management and controlling shareholders is less severe than Western capital market. Higher separation of control and cash flow rights tend to present the true performance for the controlling shareholders by refraining real activity earnings management.</p>
<p>B301-A 17:15-17:30</p>	<p>A New Index for Identifying Technology Development and a Model for Examination of the Convergence of Actual Amount of Capital to its Optimal Level in OECD Countries  <b>Ben David Nissim</b> and Garyn Tal Sharon  Emek Yezreel Academic College, Israel  <b>Abstract:</b> In this paper we extended the Solow's model for open economies, built new technology indices and compared the levels of actual and theoretical capital levels. At the first part of this paper we used the frame of Solow's model and developed it for open to trade economies and extracted the golden rule for optimal amount of capital. At the empirical part we suggested a new technique for extracting a technology index time series and calculated the technology index for 26 OECD countries for the years 1990-2011. According to our findings, the largest advance in technology occurred in Estonia, Slovenia, Poland and Ireland while the smallest advance was in Italy, Portugal, Mexico and Japan. A possible explanation for these differences is foreign R&amp;D spillovers. Assuming that the macro production function in each of the OECD countries is Cob Douglas constant return to scale, we calculated the optimal amount of capital, according to our new suggested theoretical model for each OECD country in these years. We find that actual amount of capital is smaller than optimal in Australia, Finland, Hungary, Poland, Sweden, USA and the United Kingdom. In Belgium and Spain actual amount of capital is higher than optimal, while in Austria, Canada, Czech Republic, Denmark, Estonia, France, Greece, Germany, Japan, Italy, Ireland, Norway, Netherland, Mexico, Slovenia, Portugal and Switzerland we notice that the two series converge to each other along the time path. A possible explanation here is the relation between savings and investment.</p>

<p>B303 17:30-17:45</p>	<p>China Business: A Comparative Study <b>Muammer Ozer</b> Department of Management, City University of Hong Kong, Hong Kong <b>Abstract:</b> The Chinese economy is rapidly growing. With the rapid growth of the Chinese economy, Chinese companies are expanding or contemplating to expand into the global markets. However, despite all the attractions of a global expansion, it also creates numerous significant challenges for Chinese companies before they can be successful in the global markets. In this empirical study, I compare the business practices of Chinese and Western companies and discuss evidence-based courses of actions for Chinese companies in their business.</p>
<p>MK0001 17:45-18:00</p>	<p>Skills and Factors of e-Government: Case study of Sultanate of Oman <b>Muatasim Al Salmi</b>, Shahimi Mohtar and Norlena Hasnan Universiti Utara Malaysia, Malaysia <b>Abstract:</b> Every government is seeking to provide the best services to its country to achieve efficiency and accepted performance. This goal could be achieved by improving the service performance of the entire sectors in society. Revealing key elements of e-government factors and skills that would affect the success of e-Government is the study priority goal. Hence, the purpose of this research is to investigate and explore the factors that drive the e-government implementation and adoption that would affect the government performance as well as the success in Sultanate of Oman. Thus, the study outcomes should be the guidance to conduct e-government projects in Sultanate of Oman to reduce and eliminate as much as possible the failure possibilities. The study should also provide roadmaps and guidelines for future researchers and policy makers on the project in general and focused in citizen's determinants for e-government services that would enhance the Citizen-government relationship.</p>
<p>MK0002-A 18:00-18:15</p>	<p>Willingness to Pay Premium: Love or Commitment Sofiani Djohan and <b>Ritzky Karina Brahmana</b> Universitas Kristen Petra Surabaya, Indonesia <b>Abstract:</b> This research aims to examine the effect of brand congruity on the relationship between brand love and brand commitment for customer willingness to pay premium on luxury fashion brand. Fashion industry significantly increasing at emerging market (such as Indonesia) especially for luxury fashion brand. Many of competition in this industry, requires a mandatory relationship between brands and consumers. Consumers determine their relationship with various brands, brands that instill in the minds of consumers. This research will show Indonesian willingness to pay premium for luxury fashion product. This model is rooted in the causal approach. The data in this study were processed using data analysis techniques Structural Equation Modelling (SEM) through Smart-PLS. The samples used in this study were 200 respondents that from 5 big cities in Indonesia which are Medan, Bandung, Jakarta, Surabaya and Makassar. Interestingly, although the brand commitment not really influence the willingness to pay premium but the brand love affected it for sure.</p>
<p>MK0004 18:15-18:30</p>	<p>Model Behavior of Individual Investors Based on DISC-Personality and Demographics In Indonesia Stock Market <b>Elizabeth Lucky Maretha Sitinjak</b>, Kristiana Haryanti, and Wisnu Djati Sasmito</p>



	<p>Soegijapranata Chatolic University, Indonesia</p> <p><b>Abstract:</b> The financial behavior bias is influenced by the personality and individual investor demographics. Method of subject block within random experimentation design is done in this study. The pretest and posttest were first done in Semarang, then outside of Java, i.e. North Sumatra and North Sulawesi, to represent the number of individual investors outside of Java. The purpose of this study is to create a model of the behavior of individual investors in Indonesia. A model of decision making to buy or sell stocks is based on personality and demography.</p> <p>The results of this research is a portfolio of assets which is a combination of 2 or 3 shares. With the outcome of the research we expect to know the optimum stock development. The dominant personality of investors in this study tend to be peace maker and precisionist, as the result of the combination between the Dominance (self-confident, self-reliant, assertive, direct, active, dynamic, capable of leading, adventurous, supportive or innovative), Steadiness (friendly, patient, sociable, quiet, sympathetic, outgoing and friendly), and Compliance (faithful, diligent, resourceful, realistic, serious, sensitive).</p>
<p>MK0011 18:30-18:45</p>	<p>The Research on the Relationship among the Visitors Experience and Satisfaction: Taking 2016 Parent-Child Sports Carnival as an Example</p> <p><b>Hsiao-Hsuan Chan</b> and Chih-Chiang Chung National Yunlin University of Science and Technology, Taiwan</p> <p><b>Abstract:</b> The formation of festivals are inseparable with the daily lives of the people, festivals through the change of the times, gradually become rich and diverse activities, through a clear and special theme for festivals has brought a lot of people. The purpose of this study was to find out the relationship between experience and satisfaction, and to understand the experience and satisfaction of visitors to participate in the activities of the situation, for the study to give the organizers of the future activities of the reference. Data were collected from surveys completed by 80 attendees of 2016 Parent-Child Sports Carnival. This study employed reliability and validity analysis, factor analysis, and regression analysis to achieve its goals. Experience has a positive effect on satisfaction. Among the three dimensions of visitors' experience, the most agreeable aspect is the "Affection Experience", and the highest degree of "Satisfied with the activities of traffic". In terms of individual predictive power, the "Perceive Experience" was the most influential, followed by the "Affection Experience". The results indicated that two experience dimensions (perceive and affection) significantly influenced satisfaction. The results revealed that satisfaction was only affected by perceive and affection, but not affected by associate.</p>
<p>MK0013-A 18:45-19:00</p>	<p>Engaging Behavioral Economics in Public Administration: Opportunities for Improved Compliance</p> <p><b>David Kasdan</b> Sung Kyun Kwan University, Korea</p> <p><b>Abstract:</b> The connection between public administration and behavioral economics goes back to Herbert Simon, who recognized the tension between institutional demands of rational efficiency and the reality of individuals' alternate objectives. There is now a concentrated push for research following well-publicized recent empirical evidence of favorable synergies</p>

	<p>between the disciplines. There are plentiful opportunities for public administration to adopt the insights of behavioral economics in order to gain policy compliance and improve outcomes when traditional utility maximization decision-making models fall short of expectations. This paper introduces a perspective on “behavioral administration” and argues for its theoretical basis in both Platonic and Confucian philosophies of governance. It offers several practical applications of concepts, as well as proposing future directions for the development of behavioral administration.</p>
<p>MK0018 19:00-19:15</p>	<p>The Effects of Organizational Influence, Purchase Importance and Supplier Trust on Public Purchase Decision in Dong Nai Province – A Mediation Analysis of Organizational Emotions  <b>Ly Tran Thao Vy</b> and Nguyen Thanh Tuan  International University - Vietnam National University, Ho Chi Minh City, Viet Nam  <b>Abstract:</b> Literature review of public buying behavior is gradually expanding; however, there is still a gap of this field in Southeast Asian countries in general and Vietnam for specific. For that reason, this research from the guidance of previous organizational buying behavior studies developed a theoretical framework and hypotheses in order to examine whether the factors of organizational, purchase importance and level of supplier trust affected emotions of the organization, which in turn influenced the organizational behavior on its supplier choices. The result drawing from 421 respondents working in various educational institutions of Dong Nai province, Vietnam did confirm the direct impacts the three factors on organizational buying decision; whereas emotions of organization exerted its mediating role on the set of relationship effects. Implications from this paper would be applied for both current local and regional institutions to implement and turn into practical management activities in their buying decision.</p>

19:30-21:00, April 8, 2017	Dinner Banquet Venue:
----------------------------	--------------------------

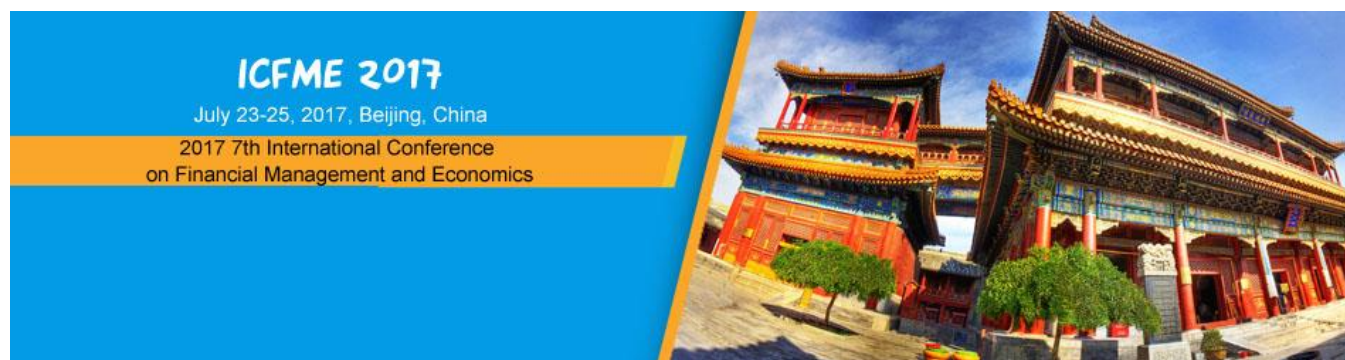
## Poster Session

MK0010	<p>The Influence of Store Atmosphere and Behavior Intention: A Case Study of Eslite Xmyi Store</p> <p>Ya-Hsuan Lin and Chih-Chiang Chung</p> <p>National Yunlin University of Science and Technology, Taiwan</p> <p><b>Abstract:</b> This paper aimed at identifying the effects of store atmosphere on the consumer behavior Intention in bookstore retail chain outlets of Eslite Xmyi Store, Taiwan. Investigate the relationship between the store atmosphere and behavior Intention. This research was causal in nature. A sample of 80 consumers was taken who usually visited eslite Xmyi Store. Data was collected through a well-structured questionnaire and data was analyzed by using the SPSS 21.0 software, analyzed through regression analysis. Research findings indicate that atmospheric variables such as service factor have a positive influence on consumers' behavior intention; whereas ambient factors have insignificant impact on consumers' behavior intention. The design factors has almost no impact on the behavior intention of the consumers. This study has important implication for Practitioners and Academicians.</p>
--------	---

## Listeners' List

Listener 1	<p><b>Collins Asiedu</b></p> <p>Bleek Consult Limited, Ghana</p>
Listener 2	<p><b>Kwaku Oppong</b></p> <p>Global First Aid Limited, Ghana</p>
Listener 3	<p><b>Uttamananda Sraman</b></p> <p>The University of Hong Kong, Hong Kong</p>
Listener 4	<p><b>Sree Mattananda Sraman</b></p> <p>The University of Hong Kong, Hong Kong</p>

# Call For Papers



2017 7th International Conference on Financial Management and Economics (ICFME 2017), will be held in Beijing, China during July 23-25, 2017.

ICFME aims to bring together researchers, scientists, engineers, and scholar students to exchange and share their experiences, new ideas, and research results about all aspects of Financial Management and Economics, and discuss the practical challenges encountered and the solutions adopted.

## Publication



Option A: Journal of Economics, Business and Management (JOEBM, ISSN: 2301-3567, DOI: 10.18178/JOEBM), which will be included in Engineering & Technology Library, Electronic Journals Library, Ulrich's Periodicals Directory, MESLibrary, Google Scholar, Crossref, and ProQuest.



Option B: International Journal of Trade, Economics and Finance (IJTEF, ISSN: 2010-023X, DOI: 10.18178/IJTEF), which will be included in Engineering & Technology Digital Library, ProQuest, Crossref, Electronic Journals Library, EBSCO, and Ulrich's Periodicals Directory

## Important Dates

Submission Deadline	Before May 15, 2017
Acceptance Notification	On June 5, 2017
Registration Deadline	Before June 25, 2017
Conference Date	July 23-25, 2017



2017 International Conference on Business and Information Management (ICBIM 2017), will be held in Beijing China during July 23-25, 2017.

ICBIM aims to bring together researchers, scientists, engineers, and scholar students to exchange and share their experiences, new ideas, and research results about all aspects of Business and Information Management, and discuss the practical challenges encountered and the solutions adopted.

## Publication



Option A: International Conference Proceedings Series by ACM, which will be archived in the ACM Digital Library, and indexed by Ei Compendex and Scopus and submitted to be reviewed by Thomson Reuters Conference Proceedings Citation Index (ISI Web of Science).



Option B: International Journal of e-Education, e-Business, e-Management and e-Learning (IJEEEE), (ISSN: 2010-3654), which will be indexed by Engineering & Technology Digital Library, Google Scholar, Electronic Journals Library, QUALIS, ProQuest, EI (INSPEC, IET).

## Important Dates

Submission Deadline	Before May 15, 2017
Acceptance Notification	On June 5, 2017
Registration Deadline	Before June 25, 2017
Conference Date	July 23-25, 2017



2017 7th International Conference on Education, Research and Innovation

2017 7th International Conference on Education, Research and Innovation (ICERI 2017), will be held during August 6-8, 2017, in Taipei, Taiwan.

ICERI 2017 aims to bring together researchers, scientists, engineers, and scholar students to exchange and share their experiences, new ideas, and research results about all aspects of Education, Research and Innovation, and discuss the practical challenges encountered and the solutions adopted. The conference will be held every year to make it an ideal platform for people to share views and experiences in Education, Research and Innovation and related areas. For more details of the conference schedule, please feel free to contact us at [iceri@iedrc.org](mailto:iceri@iedrc.org). The full version of program will be given on Mid July.

## Publication



Option A: International Journal of Information and Education Technology (IJIET, ISSN: 2010-3689, DOI: 10.18178/IJIET) as one volume, and will be included in the EI (INSPEC, IET), Cabell's Directories, Electronic Journals Library, Engineering & Technology Digital Library, Google Scholar, Crossref and ProQuest etc.



Option B: International Journal of Innovation, Management and Technology (IJIMT, ISSN: 2010-0248, DOI: 10.18178/IJIMT) as one volume, and will be included in Google Scholar, Ulrich's Periodicals Directory, Engineering & Technology Digital Library, Crossref and ProQuest, Electronic Journals Library.

## Important Dates

Submission Deadline	Before April 30, 2017
Acceptance Notification	On May 20, 2017
Registration Deadline	Before June 10, 2017
Conference Date	August 6-8, 2017



2017 4th International Conference on Economics, Society and Management (ICESM 2017) will be held in Toronto, Canada during September 10-12, 2017. ICESM aims to bring together researchers, scientists, engineers, and scholar students to exchange and share their experiences, new ideas, and research results about all aspects of Economics, Society and Management, and discuss the practical challenges encountered and the solutions adopted.

## Publication



Journal of Economics, Business and Management (JOEBM, ISSN: 2301-3567, DOI: 10.18178/JOEBM) as one volume, and will be included in DOAJ, Engineering & Technology Library, Electronic Journals Library, Ulrich's Periodicals Directory, MESLibrary, Google Scholar, Crossref, and ProQuest.

## Important Dates

Submission Deadline	Before April 20, 2017
Acceptance Notification	On May 10, 2017
Registration Deadline	Before June 1, 2017
Conference Date	September 10-12, 2017





2017 3rd International Conference on Education, Learning and Training will be held in Chengdu China, during October 12-14, 2017. It aims to provide a forum for researchers, practitioners, and professors from the industry, academia and government to discourse on research and development, professional practice in Education, Learning and Training.

ICELT 2017 aims to bring together researchers, scientists, engineers, and scholar students to exchange and share their experiences, new ideas, and research results about all aspects of Education, Learning and Training, and discuss the practical challenges encountered and the solutions adopted. The conference will be held every year to make it an ideal platform for people to share views and experiences in Education, Learning and Training and related areas. For more details of the conference schedule, please feel free to contact us at [icelt@iedrc.net](mailto:icelt@iedrc.net).

## Publication



Submissions will be reviewed by the conference committees and accepted papers will be published in International Journal of Learning and Teaching (IJLT, ISSN 2377-2891, DOI: 10.18178/ijlt) as one volume, and will be included in the Google Scholar, Engineering & Technology Digital Library; etc

## Important Dates

Submission Deadline	May 25, 2017
Acceptance Notification	June 15 2017
Registration Deadline	July 5, 2017
Conference Date	October 12-14, 2017





The 2017 6th International Conference on Business, Management and Governance (ICBMG 2017) will be held in Townsville, Australia during November 17-19, 2017. It aims to provide a forum for researchers, scientists, engineers, and scholar students from both the industry and the academia to share their newest research findings and results.

## Publication



International Journal of Innovation, Management and Technology (IJIMT, ISSN: 2010-0248, DOI: 10.18178/IJIMT) as one volume, and will be included in the Google Scholar, Ulrich's Periodicals Directory, Engineering & Technology Digital Library, Crossref and ProQuest, Electronic Journals Library.

## Important Dates

Submission Deadline	June 30, 2017
Acceptance Notification	July 20, 2017
Registration Deadline	August 10, 2017
Conference Date	November 17-19, 2017



The 2017 8th International Conference on Economics, Business and Management (ICEBM 2017) will be held in Townsville, Australia during November 17-19, 2017. It aims to provide a forum for researchers, scientists, engineers, and scholar students from both the industry and the academia to share their newest research findings and results.

## Publication



Journal of Economics, Business and Management (JOEBM, ISSN: 2301-3567, DOI: 10.18178/JOEBM) as one volume, and will be included in DOAJ, Engineering & Technology Library, Electronic Journals Library, Ulrich's Periodicals Directory, MESLibrary, Google Scholar, Crossref, and ProQuest.

## Important Dates

Submission Deadline	June 30, 2017
Acceptance Notification	July 20, 2017
Registration Deadline	August 10, 2017
Conference Date	November 17-19, 2017

This image shows a blank sheet of white paper with horizontal ruling lines. The lines are evenly spaced and run across the width of the page. There are no margins, text, or other markings on the paper.

[illegible]